

## VISIT THE NEW FOREST CENTRE

Includes the New Forest Museum, Special Exhibition Gallery and Reference Library. Explore our Family Fun Tree and discover the history, traditions and wildlife of this amazing area.

### Holiday Activities

Family Discovery Days and children's events during the holidays. Learn more about the New Forest whilst having fun.

### Exhibitions and events

Pick up our leaflet or visit our website to find out what's on.

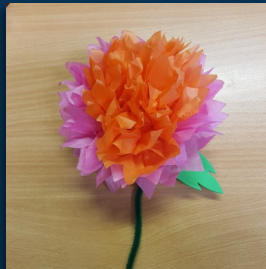
### Gift Shop

Come and browse in our gift shop to find that perfect present or souvenir.



## Family Discovery Days

Learn about the New Forest and have fun with our family friendly activities. No need to book, just drop in between 10am and 4pm (Museum entry is free, £1 per craft activity).



### Discovery Day dates for 2017:

11 Apr - Easter	13 Apr - Easter
18 Apr - Trees	20 Apr - Trees
30 May - Birds	1 Jun - Bees
1 Aug - Forest Art	3 Aug - Forest Art
8 Aug - Commoning	10 Aug - Commoning
15 Aug - Insects	17 Aug - Insects
22 Aug - People of the Forest	
24 Aug - People of the Forest	
29 Aug - Love the New Forest	
31 Aug - Love the New Forest	



### Find Us

Find us just off Lyndhurst High Street in the main car park. Follow the brown Visitor Information signs. Accessible for wheelchair users and wheelchair available on request. Large print leaflet available on request.

### Open Daily

10am - 5pm 1 Apr - 29 Oct.  
Last Museum entry 30 mins before closing. See our website for Library opening times.

New Forest Centre  
Lyndhurst, Hampshire  
SO43 7NY  
Tel: 023 8028 3444



[www.newforestcentre.org.uk](http://www.newforestcentre.org.uk)  
Lyndhurst, Hampshire SO43 7NY

New Forest Ninth Centenary Trust  
Registered Charity No: 279373

All details correct at  
time of going to print

Supported by:



**New Forest**  
DISTRICT COUNCIL



Supported by  
**The National Lottery**  
through the Heritage Lottery Fund



**Our Past, Our Future**  
Working together for the New Forest



**NEW FOREST**  
**CENTRE**

LYNDHURST

# What's On Apr - Sep 2017



**023 8028 3444**

[www.newforestcentre.org.uk](http://www.newforestcentre.org.uk)

Reg Charity No: 279373



MUSEUM



SHOP



GALLERY



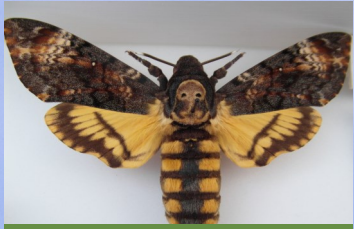
REFERENCE  
LIBRARY



DISCOVERY  
DAYS

# FREE ENTRY

# Events at the New Forest Centre



## CHILDREN'S WORKSHOP

**13 May - Mixed-up Mini Beasts! 10.15am - 11.15am & 11.45am - 12.45pm**

Be inspired by bugs of all shapes and sizes! View them up close with microscopes and magnifiers before creating your own mixed-up mini beasts out of clay. (Age 5 - 11, adult accompaniment needed.) £5 PER CHILD PER SESSION  
BOOKING REQUIRED



## TALK

**14 Jun - Drawn from the Forest: An Artist's View 7pm - 8.30pm**

The New Forest's landscape has always inspired artists and writers. Many recorded their heritage, some made it their livelihood; for outsiders, such as the bohemian Sven Berlin, it was more: A spiritual retreat and place of sanctuary. Join writer Sonia Aarons as she

explores why Berlin and others were irresistibly drawn to interpret what he called 'The Green City'. This memorable evening of art and literature includes a Q & A session and the opportunity to discover all the New Forest Centre has to offer. Part of the New Forest Arts Festival.

TICKETS £6 (£4 MEMBERS)  
BOOKING REQUIRED



## CONCERT

**22 Jun - All Trees are Clocks: A live multi-media Performance 7.30pm**

A unique opportunity to see a live performance of 'All trees are clocks', a multi-media piece specifically composed to accompany the exhibition displayed in the New Forest Gallery until 9 July. The concert will be given by Emily Burrigde (cello) and Karen Wimbhurst (clarinet), who will accompany a presentation of sound and video documenting how the New Forest woodlands change throughout the year. Part of the New Forest Arts Festival. TICKETS £7  
BOOKING REQUIRED



## FREE FAMILY WORKSHOP

**24 Jun - All Trees are Clocks: A Family Workshop 12pm - 4pm**

Join Professor Adrian Newton of Bournemouth University for some hands-on activities to help learn about the ecology of the New Forest. Come and play with the ponies in our model diorama. Count the tree rings on an ancient beech tree. Explore the interactions between ponies and plants in a computer game. Learn what research can tell us about how the New Forest is changing. Part of the New Forest Arts Festival. FREE DROP-IN EVENT  
BOOKING NOT REQUIRED



## FUNDRAISING TALK

**15 Sep - An Audience with Simon King 7.30pm (Doors open 7pm)**



Join naturalist, author and TV broadcaster Simon King OBE for a talk (with Q&A session) at Lyndhurst Community Centre and help raise funds for the New Forest Centre. Sponsored by NFU Mutual. TICKETS £15 (£12 MEMBERS)  
BOOKING REQUIRED



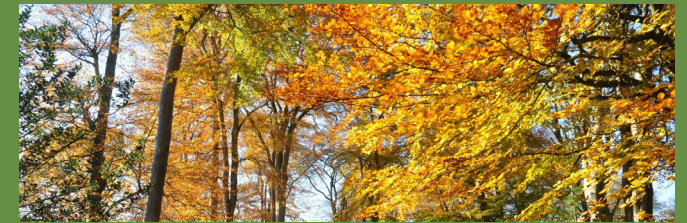
## CHILDREN'S WORKSHOP

**30 Sep - Weaving Trees 10.15 - 11.45am, ages 5 - 10 1 - 2.30pm, ages 11 - 16**

Come along and make your own tree of life by weaving different colours and textures onto a willow ring. (Adult accompaniment needed.) £7 PER CHILD PER SESSION  
BOOKING REQUIRED

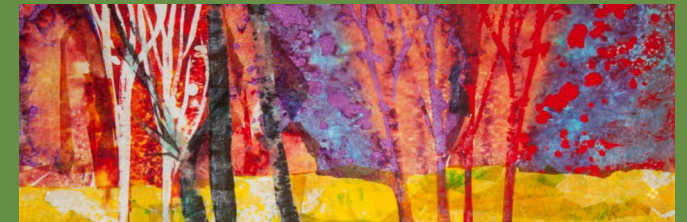
## Exhibitions in the New Forest Gallery

Gallery open daily 10am to 4.30pm from 1 April to 29 October (10am to 3.30pm at all other times).



**8 Apr to 9 Jul - All Trees are Clocks by Professor Adrian Newton of Bournemouth University**

A multimedia exhibition of art and science profiling the results of recent research into the ecology of the New Forest and the potential impacts of climate changes. Part of the Forest Arts Festival.



**15 July to 8 Oct - New Forest Open Art Exhibition**

The ever popular Open Art Exhibition returns for another season to showcase the best of the creative New Forest. In partnership with the National Park Authority and sponsored by ExxonMobil.

**ExxonMobil**

Supported by ExxonMobil at the Fawley Refinery

## Christopher Tower Reference Library Free Open Day

**1 July, 10am - 4pm**

Situated on the upper floor of the New Forest Centre, the Christopher Tower Reference Library contains a large collection of New Forest publications, maps and ephemera. Come along and discover our local history resources. BOOKING NOT REQUIRED

