



NEW FOREST
CENTRE



Discover
the National
Park

LYNDHURST



WHAT'S ON 2015

newforestcentre.org.uk

Registered Charity No. 279373



MUSEUM



SHOP



GALLERY



REFERENCE
LIBRARY



Opening hours 2015

The Centre, including the Museum, is open daily from 10am to 5pm.

Please see our website for Reference Library opening hours.

Last admissions to the Museum and Library are at 4pm.

Please note that the Centre is shut on Christmas Day, Boxing Day and 1 February.

Facilities

Seating and wheelchair available, Full wheelchair access, nappy changing facilities, dogs welcome, large print versions of display and exhibition labels available.

Admission

MUSEUM AND REFERENCE LIBRARY

Accompanied under 16s	FREE
Standard ticket	£4.00
Concession ticket	£3.00
Entrance to Gallery	FREE

Gift aiding your admission is a great way to help us make your donation to the charity go further.

Booking and information

023 8028 3444

www.newforestcentre.org.uk

office@newforestcentre.org.uk

New Forest Centre
Lyndhurst SO43 7NY

New Forest Ninth Centenary
Trust, Registered Charity
No. 279373

NEW FOREST CENTRE

Conveniently located in Lyndhurst in the heart of the National Park, the New Forest Centre is both museum and visitor centre. Here you'll find everything from museum displays, a great reference library and visitor information, to a varied exhibitions and events programme for all ages that will keep everyone happy. Whether resident to the area or visiting from afar, the New Forest Centre is the place to start your journey of enjoyment and understanding of this spectacular landscape.

“Excellent for adults and children alike! Thank you!”

AUGUST 2014

MUSEUM — 4

GALLERY — 5

SHOP — 6

REFERENCE LIBRARY — 7

EXHIBITIONS — 8

SUPPORT US — 10

EVENTS — 12

GROUP VISITS — 17

DISCOVERY DAYS — 18



MUSEUM

Why is the New Forest called new and why doesn't it look like a forest? Who owns the ponies and why are they allowed to roam free? If you've ever wondered about these and other Forest questions, then find out the facts behind this fascinating landscape at the New Forest Museum. From the Family Fun Tree to the New Forest Embroidery, there's lots for all ages to enjoy.

Enjoy our Museum trails and quizzes and join us for our family friendly activities throughout the year.



**CHILDREN
GO FREE**





GALLERY

In 2015 the New Forest Gallery will host a new season of quarterly exhibitions. Arthur Phillip – unsung local hero, the story of the man who captained the First Fleet out to Australia in 1788, is back by popular demand, followed in April by a mixed artist exhibition staged in partnership with Creative Coverage.

Watch our website for details of this year's Open Art competition and exhibition being stage this summer and take a look at our final exhibition being staged this year that looks at the important role played by LIDAR (Laser Imaging Detection and Ranging system) in helping reveal the secrets locked into our ancient landscapes.



SHOP

We pride ourselves on offering a range of affordable gifts to remind you of your visit to the New Forest or for that special present to a friend or family member. From postcards to perfume, you may even want to treat yourself!

All profits from the shop go towards helping to sustain the charitable objects of the New Forest Ninth Centenary Trust.

Please see www.newforestcentre.org.uk/support-us to find out more about the work of the Trust and discover other ways in which you can help support us.



REFERENCE LIBRARY

The Christopher Tower Reference Library houses the largest public collection of books, maps, reports and ephemera on the New Forest. Whether it's the landscape, the villages or the personalities that lived here that interest you. See our website or phone for details of Library opening times. There's a wealth of information just waiting to be discovered.



EXHIBITIONS

10.00am to 4.30pm in the New Forest Gallery



Arthur Phillip – Unsung Local Hero. The Lyndhurst – Australia Connection

Until 29 March



Following the success of last year's exhibition, Arthur Phillip – unsung local hero is back by popular demand. Admiral Arthur Phillip RN (1738-1814) who first landed in Sydney Cove in 1788 is widely admired in Australia as the founder of the modern nation. As a former resident of Lyndhurst, the life of this unsung local hero is celebrated in an exhibition that has been designed to appeal to all ages. The exhibition is being staged in partnership with Lyndhurst Parish Council and has been funded by the Heritage Lottery Fund.

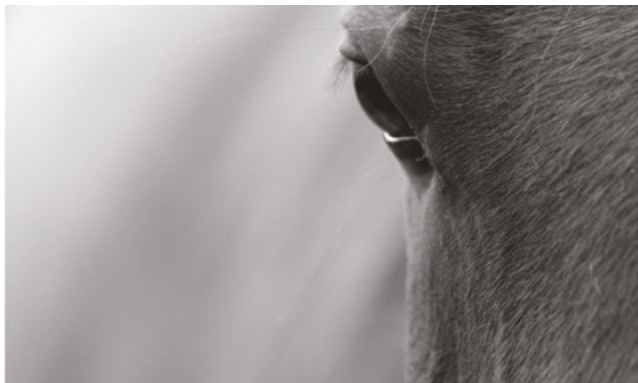


Forest Connections

A SELLING EXHIBITION

3 April to 4 July

Forest Connections is a Creative Coverage Group Exhibition featuring the work of professional artists from across Great Britain. The public will be asked to vote for their favourite work for a £100 prize sponsored by Birkett Ferguson Associates.



New Forest Open Art

A SELLING EXHIBITION

11 July to 12 September

Be sure not to miss our our third Open Art Exhibition sponsored by ExxonMobil at the Fawley Refinery. Our expert panel of judges will be selecting the best of contemporary and traditional artwork, linked by a common theme of the New Forest. Staged in partnership with the New Forest National Park Authority and Artsway, see our websites for competition and exhibition details - www.artsway.org.uk, www.newforestnpa.gov.uk and www.newforestcentre.org.uk

ExxonMobil



Shedding new light on the New Forest's past

SPECIAL EXHIBITION

19 Sep to 3 Jan 2016

An interactive exhibition revealing new archaeology that has been discovered using high-tech remote sensing to look beneath the tree canopy. New sites and monuments previously not visible through traditional survey techniques have now come to light, helping to build up a picture of the New Forest through time.

SUPPORT US

*“I’m amazed this Centre is run
by a charity. The volunteers help
to make it special.”*

DECEMBER 2014



Gift Aid

When you gift aid your Museum admission ticket, you not only allow us to claim back the tax on your donation but you will be able to return to the Museum as many times as you like throughout a twelve month period. All for the price of one ticket.

Friends Membership

For as little as £10 a year, you'll not only gain free entry to the Museum throughout the year, but benefit from discounted talks and events tickets. Pick up a leaflet or download it from our website.

Make a donation

You can make a donation by going onto our website and clicking on 'donate' or if you or your business would like to sponsor the Centre or its activities in any way, then please do contact us and we'll be happy to chat over ways of supporting the work of the charity.

Leave a legacy

We've a specially printed leaflet that details how you can help the long term sustainability of the New Forest Centre by leaving the charity something in your will.

Support our shop

By buying something in our shop, you'll be helping the work of the charity on a day to day basis. Alternatively, buy a painting at one of our regular art exhibitions. A perfect present or a treat for yourself!

Volunteer

If you've got a few hours to spare during the week or on an irregular basis, do consider helping us in the Museum, Gallery and Library.

**Have a chat with our
Volunteer Co-ordinator on 023 8028 6153
email: suzie.moore@newforestcentre.org.uk.
It could be the best decision you make this year!**



EVENTS

To book call 023 8028 3444 or see our website



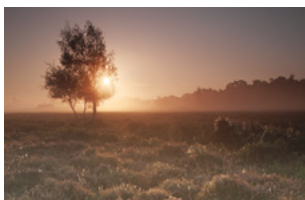
WORKSHOP

Bee and Bug boxes with Dave Dibden

Sat 14 Mar 10am-1pm
Incs. tea/coffee at 10am
for a 10.30 start

An opportunity to work alongside a local craftsman to make solitary bee or bug houses to take home. All materials provided. Places limited.

£20 PER PERSON
SUITABLE FOR 12YRS+
BOOKING REQUIRED



WORKSHOP

Photography Workshop with Mike Read

Sat 18 Apr 10am-4pm

Professional photographer Mike Read, will help you understand your camera and teach you how to create compositions. Own transport needed. Bring packed lunch, camera and, if possible, a tripod. Walking boots and suitable outdoor clothing needed.

£50 PER PERSON
PLACES LIMITED
BOOKING REQUIRED



EVENING TALK

Deer of the British Isles by Stan Kemish of the British Deer Society, Wessex Branch

Wed 6 May
Refreshments from 7pm,
Talk 7.30-8.30pm,
Q&A 8.30-9pm

Presentation of the six species
of deer in the British Isles,
focusing on the New Forest.

£6 NON-MEMBERS £4 MEMBERS
BOOKING REQUIRED



EVENING TALK

Bees by Ted Scott of the Bee-Keeper Association

Wed 3 Jun
Refreshments from 7pm,
Talk 7.30-8.30pm,
Q&A 8.30-9pm

An illustrated presentation
about honeybees and their
life cycle, given by a local bee
keeper with more than 40
years' experience.

£6 NON-MEMBERS £4 MEMBERS
BOOKING REQUIRED



WORKSHOP

Top 10 herbs for the medicine cupboard with Rachel Heathcote

Sat 9 May 10am-1pm
Tea/coffee at 10am
for a 10.30 start

A hands-on talk and
demonstration which will teach
you about essential herbs
to keep at home for treating
common ailments. We will
look at making some simple
preparations and you will go
home with samples, recipe and
information handouts.

£30 PER PERSON
PLACES LIMITED
BOOKING REQUIRED



WORKSHOP

Tracing Army Ancestors led by Hampshire Record Office

Sat 13 Jun 10am-12.30pm
Tea/coffee at 10am
for a 10.30 start

Do you have a soldier in your
family tree? An introduction
to sources for tracing army
ancestors at The National
Archives, local archives and
regimental museums.

£15 PER PERSON
PLACES LIMITED
BOOKING REQUIRED



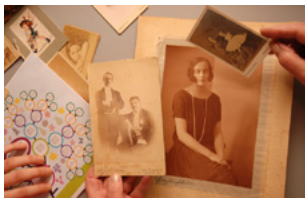
WORKSHOP

Lazy Summer eating with Judith Long

Sat 4 Jul 10am-1pm
Tea/coffee at 10am
for a 10.30 start

A cookery demonstration using local produce to create quick and easy summer dishes for the family and for entertaining. Tasting is compulsory and recipes will be provided to take home.

£10 PER PERSON PLACES LIMITED
 BOOKING REQUIRED



WORKSHOP

Family History for beginners: Find your ancestors in the archives led by Hampshire Record Office

Sat 12 Sep 10am-12.30pm
Tea/coffee at 10am
for a 10.30 start

Discover the main sources available and how to use them to begin researching your family tree.

£15 PER PERSON PLACES LIMITED
 BOOKING REQUIRED



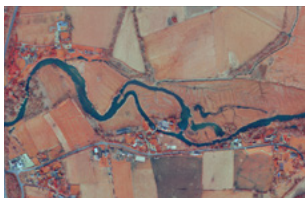
FAMILY FUN

Discover your National Park Day

Sat 22 Aug 10am-4pm

Free entry to Museum. A day of walks and activities in and around the Centre and the historic Queen's House for the whole family. Find out all about the New Forest ponies and make your own Hobby Pony! Small charge for craft activity.

BOOKING NOT REQUIRED
 JUST TURN UP



AFTERNOON TALK

Shedding new light on the New Forest's past by Lawrence Shaw, Heritage Mapping and Data Officer, NFNPA

Wed 23 Sep
Refreshments from 2pm,
Talk 2.30-3.30pm,
Q&A 3.30-4pm

Detailed archaeological surveys of the crown lands have been undertaken using LiDAR. This talk will look to reveal what has been discovered to date. Ticket includes free entry to Museum.

£6 NON-MEMBERS £4 MEMBERS
 BOOKING REQUIRED



AFTERNOON TALK

Fungi by Simon Moore

Wed 7 Oct

**Refreshments from 2pm,
Talk 2.30-3.30pm,
Q&A 3.30-4pm**

Find out more about fungi and how to identify them at this fascinating talk. Ticket includes free entry to Museum.

£6 NON-MEMBERS £4 MEMBERS
BOOKING REQUIRED



WORKSHOP

Photography Workshop with Mike Read

Sat 10 Oct 10am-4pm.

Professional photographer Mike Read, will help you understand your camera and teach you how to create compositions. Own transport needed. Bring packed lunch, camera and, if possible, a tripod. Walking boots and suitable outdoor clothing needed.

£50 PER PERSON
PLACES LIMITED
BOOKING REQUIRED

Bookings for all ticketed events can be made in person at our Gift Shop reception desk or call

023 8028 3444



FAMILY FUN

Jack O' Lantern Pumpkin Carving

**Tue 27 Oct & Thu 29 Oct
10.15-11.00 & 11.45-12.30**

Two bookable sessions per day. Pumpkins supplied.

£6 PER PUMPKIN
BOOKING REQUIRED

**Tue 27 Oct & Thu 29 Oct
1.30-3.00pm**

Drop in sessions. Bring your own pumpkin to carve.

£5 PER SESSION
BOOKING NOT REQUIRED



AFTERNOON TALK

Gunpowder Factory in Fritham by Stephen Ings

Wed 4 Nov

**Refreshments from 2pm,
Talk 2.30-3.30pm,
Q&A 3.30-4pm**

A talk on the Gunpowder Works at Eyeworth between 1860 and 1821, the Schultze Gun Powder Company and the production of smokeless gunpowder. Ticket includes free entry to Museum.

£6 NON-MEMBERS £4 MEMBERS
BOOKING REQUIRED



WORKSHOP

Make a Christmas Wreath with Liz Wyatt

Sat 28 Nov

Session 1: 10am-1pm
Tea/coffee at 10am
for a 10.30am start

Session 2: 2pm-5pm
Tea/coffee at 2pm
for a 2.30pm start

Make a fresh, seasonal wreath ready for Advent. All materials supplied.

£30 PER PERSON
PLACES LIMITED
BOOKING REQUIRED



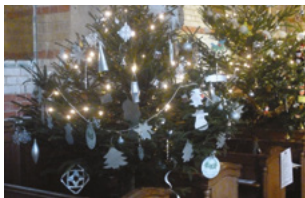
AFTERNOON TALK

Curiouser and curiouser by Angela Trend

Wed 2 Dec
Refreshments from 2pm,
Talk 2.30-3.30pm,
Q&A 3.30-4pm

Celebrating 150 years since the first publication of Lewis Carroll's Alice in Wonderland book. Ticket includes free entry to Museum.

£6 NON-MEMBERS £4 MEMBERS
BOOKING REQUIRED



FAMILY FUN

Christmas Fun Day at the Centre

Sat 5 Dec 10am-4pm

Free entry to Museum. Seasonal fun, crafts and activities as part of Lyndhurst Christmas Fun Day activities. Enjoy a mince pie and some seasonal punch.

BOOKING NOT REQUIRED
JUST TURN UP



WORKSHOP

Maps for local history led by Hampshire Record Office

Sat 12 Dec 10am-12.30pm
Tea/coffee at 10am
for a 10.30 start

A workshop on how to use historic maps to uncover the history of your local area.

£15 PER PERSON
PLACES LIMITED
BOOKING REQUIRED

Bookings for all ticketed events can be made in person at our Gift Shop reception desk or call

023 8028 3444



GROUP VISITS

The New Forest Centre welcomes visits from groups of all ages, whether a recognised organisation or an informal group of family or friends. The education team can provide a variety of sessions either at the Centre, in the New Forest itself or at your meeting place and the sessions can be tailored to suit the requirements of your group.

**Please contact our education team on 023 8028 6153
to find out more or to make a booking.**



DISCOVERY DAYS

FAMILY
FRIENDLY



The New Forest Centre has run successful Family Discovery Days for many years. Everyone gets a chance to use their imagination and explore their crafty side whilst learning more about the New Forest.

We are delighted to now be a Learning Destination for the Children's University scheme and the Discovery Days count towards hours of learning.

Discovery Days are drop in sessions in the Museum that run from 10am to 4pm, so there is no need to book in advance.

Normal Museum entrance charges apply plus a small donation towards the cost of the materials. For more detailed information about activities please see our website.

Georgian Toys

Tue 17 Feb

Year of the Sheep

Thu 19 Feb

**Spring New Forest -
butterflies**

Tue 7 Apr

**Spring New Forest - baby
animals**

Thu 9 Apr

**Spring New Forest -
flowers**

Tue 14 Apr

Spring New Forest - trees

Thu 16 Apr

New Forest Story

Tue 26 May

Thu 28 May

New Forest Champions

Tue 28 Jul

Thu 30 Jul

People of the New Forest

Tue 4 Aug

Thu 6 Aug

New Forest Creatures

Tue 11 Aug

Thu 13 Aug

My New Forest

Tue 18 Aug

Royalty in the New Forest

Thu 20 Aug

Tue 25 Aug

Love the New Forest

Thu 27 Aug

Alice in Wonderland

Tue 27 Oct

Poppies

Thu 29 Oct

*“David loved it – he’s been twice now
and he will be back again!”*

MAY 2014





NEW FOREST CENTRE

Set in the heart of the National Park

Find us just off Lyndhurst High Street in the main car park. Follow the brown Visitor Information Centre signs. Accessible for wheelchair users and wheelchair available on request.

New Forest Centre
Lyndhurst, Hampshire
SO43 7NY
Tel: 023 8028 3444
newforestcentre.org.uk

New Forest Ninth
Centenary Trust,
Registered Charity
No. 279373

Large print version available on request.

All details correct at time of going to print.

Visitor Information Centre



Visit the Visitor Information Centre to find out about walks and bike rides, accommodation, the New Forest Tour and a host of other things to see and do in the National Park. Their friendly staff will be delighted to help you with any enquiry about the New Forest to help you make the most of your visit.

Tel: 023 8028 2269

www.thenewforest.co.uk



Supported by



New Forest
DISTRICT COUNCIL

